

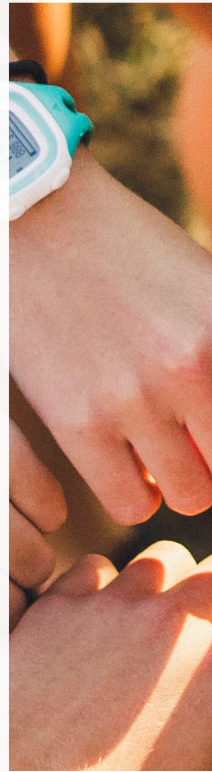


EASTERN ILLINOIS UNIVERSITY™

# THIS IS OUR LIFE'S WORK.

TRANSFER TO EIU

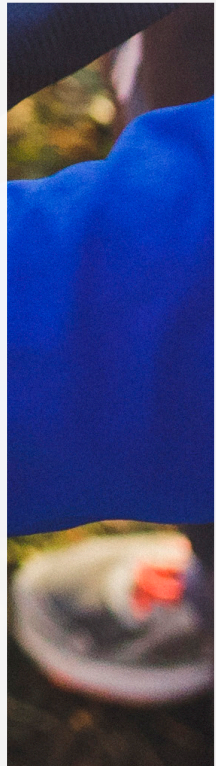




## **WE BELIEVE**

every one of our students can reach heights they never realized were possible given the right circumstances. In the right place, with the right people around them, they can learn and grow like never before, and open up greater possibilities than they imagined.

**It's that simple, and that life-changing.**



When we welcome a student, we're all in. We're committed to helping them achieve. To lift them up so they can see what they can become. We make an extraordinary, personal investment in each student that most schools would never consider. Faculty members here are incredibly invested in you as a person, well beyond imparting knowledge. Most are longtime members of our close community and can't imagine doing it any other way. While the size is personal, there are also plenty of opportunities to grow, from engaging in clubs and sports, to community service and networking with our dedicated alumni.

We invest in your future because we know the payoff is thrilling and lasting. It's no wonder people feel so strongly about EIU once they've been here. We call it "bleeding blue."

All you have to do is be ready to explore, engage and grow as our community invests in you. So you can step into a life you never knew was possible.

**We think that's truly extraordinary.**

# TRANSFER ADMISSIONS

Our all in commitment doesn't just apply to our traditional freshmen. Transfer students thrive at EIU because we invest the same energy in their success, no matter where their college career began.

## OFFICE OF TRANSFER RELATIONS

217-581-2120

[transfer@eiu.edu](mailto:transfer@eiu.edu)

[transfer.eiu.edu](http://transfer.eiu.edu)

The Office of Transfer Relations is a resource center dedicated to helping students, faculty and staff. Our office can help you with:

- Admission information
- Transfer procedures and policies
- Unofficial evaluations
- Pre-advisement
- Course equivalencies

## MEET OUR TRANSFER STAFF



**RITA PEARSON**

Transfer Coordinator  
217-581-7663  
[ripearson@eiu.edu](mailto:ripearson@eiu.edu)



**ANNE MARINO**

Suburban Chicago  
Transfer Counselor  
708-341-4240  
[acmarino@eiu.edu](mailto:acmarino@eiu.edu)



**SIERRA HOLLENBECK**

Southern Illinois  
Transfer Counselor  
217-581-7661  
[seheadrick@eiu.edu](mailto:seheadrick@eiu.edu)



**RYAN HOWARD**

Central Illinois  
Transfer Counselor  
217-581-3200  
[rdhoward@eiu.edu](mailto:rdhoward@eiu.edu)

Our staff will be your connection to a smooth and successful experience at EIU. They are committed to helping you find your way. Please contact them with questions or email Transfer Relations at [transfer@eiu.edu](mailto:transfer@eiu.edu).

## PANTHER PLEDGE

[www.eiu.edu/pantherpledge](http://www.eiu.edu/pantherpledge)

[transfer.eiu.edu](http://transfer.eiu.edu)

The Panther Pledge offers community college students guaranteed admission to Eastern Illinois University to complete their bachelor's degree.

- Guaranteed Admission
- Easy Transfer Planning
- Early Connection to EIU
- Application fee will be waived

## TRANSFER ADMISSIONS REQUIREMENTS:

MUST MEET **ONE** OF THE FOLLOWING CRITERIA

- **IF YOU HAVE 24 OR MORE SEMESTER HOURS:**  
2.0/4.0 overall; AND 2.0/4.0 from last college attended, OR
- **IF YOU HAVE FEWER THAN 24 SEMESTER HOURS:**  
2.0/4.0 overall; AND 2.0/4.0 from last college attended; AND meet the following high school admission criteria:

<u>GPA</u>	<u>and ACT</u>	<u>or</u>	<u>SAT</u>
2.5/4.0	and 18	or	960*

\*SAT 860 if taken prior to March 2016

## TRANSFER CREDIT

- Contact a transfer counselor for an unofficial evaluation of transfer credit. We will place you into the curriculum of your choice and help you plan for a smooth transfer.
- Eastern accepts all college-level transfer credit from institutions accredited by the Higher Learning Commission or other regional accrediting agencies.
- Elective credit will be awarded and applied to total hours toward graduation if there is no equivalency to a course at Eastern.
- Courses that do NOT transfer include those that are remedial, developmental or orientational in nature.
- There is no limit to the number of hours a student can transfer.
- Students must complete all remaining graduation requirements regardless of the number of hours transferred.

## APPLICATION TIMELINE

- Apply early – we begin accepting applications 1 year prior to enrollment.
- There is no specific deadline for admission application.
- Applications are accepted based upon the availability of facilities and resources.
- Applications are available online at [www.eiu.edu/apply](http://www.eiu.edu/apply).

## A COMPLETE APPLICATION INCLUDES:

- The non-refundable \$30 application fee payable to Eastern Illinois University.
- Official high school transcripts\* are requested to verify high school graduation and to check for exemption from EIU's foreign language graduation requirement.
- Official college transcripts\* from each institution attended.
- Official ACT or SAT test results are required if the applicant has fewer than 24 hours of college coursework at the time of application.

**\*Transcripts are only official when sent directly from parent institution to Eastern.**

## GRADES

- GPA is used for admission only.
- Credit for the course will transfer, not the grade.
- GPA earned at Eastern is based on only those courses taken at Eastern.
- Credit for courses in which a "D" was earned will transfer as long as the overall GPA from that institution is a least a "C" average. ("C" or better required for English and speech.)

# MAJORS, MINORS & PRE-PROFESSIONAL PROGRAMS

<b>Accounting</b> MmH	<b>Exercise Science</b> M	<b>Organizational Leadership</b> m
<b>Adult Education</b> m	<b>Fashion Merchandising &amp; Design</b> Mm	<b>Philosophy</b> MmH
<b>Advertising</b> m	<b>Film Studies</b> m	<b>Photojournalism</b> m
<b>Africana Studies</b> m	<b>Finance</b> MmH	<b>Physical Education Teaching (grades K-12)</b> M
<i>History &amp; Culture, Literature, Gender, Politics &amp; International Development</i>	<b>Financial Literacy</b> m	<b>Physics</b> MmH
<b>Aging Studies</b> m	<b>French</b> MmH	<b>Political Science</b> MmH
<b>Anthropology</b> m	<b>French - Teaching</b> MmH	<b>Pre-Chiropractic</b> m
<b>Art (BA &amp; BFA)</b> M	<b>General Studies</b> M	<b>Pre-Dentistry</b> m
<b>Art History</b> Mm	<b>Geographic Information Sciences</b> m	<b>Pre-Engineering</b> m
<b>Art - Teaching</b> M	<b>Geography</b> MmH	<b>Pre-Law</b> m
<b>Asian Studies</b> m	<b>Geology</b> MmH	<b>Pre-Medicine</b> m
<b>Astronomy</b> M	<b>German</b> MmH	<b>Pre-Nursing</b> m
<b>Biochemistry</b> MmH	<b>German - Teaching</b> MmH	<b>Pre-Occupational Therapy</b> m
<b>Biological Sciences</b> MmH	<b>Graphic Design (BA &amp; BFA)</b> Mm	<b>Pre-Optometry</b> m
<b>Broadcast Journalism</b> M	<b>Health Administration</b> MH	<b>Pre-Pathologist's Assistant</b> m
<b>Broadcast Meteorology</b> m	<b>Health Communication</b> MmH	<b>Pre-Pharmacy</b> m
<b>Business Administration</b> MmH	<b>Health &amp; Medical Humanities</b> m	<b>Pre-Physical Therapy</b> m
<b>Business Analytics &amp; Information Systems</b> MmH	<b>History</b> MmH	<b>Pre-Physician's Assistant</b> m
<b>Career &amp; Technical Education</b> M	<b>History - Teacher Licensure in Social Science</b> M	<b>Pre-Podiatry</b> m
<i>Business, Family &amp; Consumer Sciences, Technology</i>	<b>Hospitality &amp; Tourism</b> M	<b>Pre-Veterinary Medicine</b> m
<b>Chemistry</b> MmH	<b>Human Geography</b> MH	<b>Premodern Global Studies</b> m
<i>General Chemistry, Chemistry Management</i>	<b>Human Resource Management</b> m	<b>Professional Writing</b> m
<b>Child Care Education</b> M	<b>Human Services Program Admin</b> Mm	<b>Psychology</b> MmH
<b>Civic and Nonprofit Leadership</b> Mm	<b>Integrative Studies</b> M	<b>Public Affairs Reporting</b> M
<b>Clinical Laboratory Science (co-op)</b> M	<b>Interpersonal Communication</b> MH	<b>Public Health</b> m
<b>Communication &amp; Cultural Diversity</b> m	<b>International Studies</b> M	<b>Public Health - Teaching</b> m
<b>Communication Disorders &amp; Sciences</b> MH	<i>Economics, History, Political Science</i>	<b>Public History</b> m
<b>Communication in Organizations</b> MH	<b>Jazz Studies</b> m	<b>Public Relations</b> Mm
<b>Communication Studies</b> MmH	<b>Journalism</b> MmH	<b>Radio &amp; Audio Production</b> m
<b>Community Health</b> MH	<b>Kinesiology, Sport, &amp; Recreation</b> m	<b>Recreation Administration</b> MmH
<b>Computer &amp; Information Technology</b> M	<b>Kinesiology, Sport, &amp; Recreation - Teaching</b> Mm	<b>Religious Studies</b> m
<b>Computer Science</b> MmH	<b>Latin American Studies</b> m	<b>Rural Studies</b> m
<b>Computational Physics</b> M	<b>Leadership in Community Recreation</b> m	<b>Science - Teaching</b> M
<b>Construction Management</b> M	<b>Literary &amp; Cultural Studies</b> m	<i>Biological Sciences, Chemistry, Earth Sciences, Physics</i>
<b>Corporate Communication</b> MH	<b>Management</b> MmH	<b>Social Media Engagement</b> m
<b>Creative Writing</b> m	<i>Human Resource, International, General</i>	<b>Sociology</b> MmH
<b>Criminology &amp; Criminal Justice</b> Mm	<b>Management Information Systems</b> m	<b>Spanish</b> MmH
<b>Digital Media</b> Mm	<b>Marketing</b> MmH	<b>Spanish - Teaching</b> MmH
<b>Early Childhood Education</b> M	<b>Mass Communication</b> MH	<b>Special Education: Early Childhood</b> MH
<b>Early Childhood Program Administration</b> m	<b>Mathematics</b> MmH	<b>Special Education: Standard Special</b> MH
<b>Earth Science</b> m	<b>Mathematics Teaching (grades 9-12)</b> MmH	<b>Sport Management</b> M
<b>Economics</b> MmH	<b>Meeting &amp; Event Management</b> m	<b>Sports Media Relations</b> Mm
<b>Electrical Engineering</b> M	<b>Middle Level Education (grades 5-8)</b> M	<b>Studio Art (BA &amp; BFA)</b> Mm
<b>Elementary Education (Grades 1-6)</b> M	<b>Military Science</b> m	<i>Two-Dimensional, Three-Dimensional</i>
<b>Emergency Mgmt &amp; Disaster Preparedness</b> MH	<b>Music</b> MmH	<b>Talent Development</b> m
<b>Engineering (co-op)</b> M	<i>Audio &amp; Recording Technology, Open Studies, Music Theory &amp; Composition</i>	<b>Television &amp; Video Production</b> M
<b>Engineering Physics</b> M	<b>Music Performance</b> MH	<b>Theatre</b> MmH
<b>Engineering Technology</b> Mm	<i>Instrumental, Keyboard, Vocal, Composition, General</i>	<i>Performance, Musical Theatre, Tech/Design, General</i>
<b>English</b> MmH	<b>Music - Teaching</b> MH	<b>Therapeutic Recreation</b> M
<i>Literary &amp; Cultural Studies, Creative Writing, Professional Writing, English Studies</i>	<i>Instrumental, Vocal, General</i>	<b>Video Production</b> m
<b>English Language Arts - Teaching</b> Mm	<b>Music Technology</b> m	<b>Women's, Gender, &amp; Sexuality Studies</b> m
<b>Entrepreneurship</b> m	<b>Neuroscience</b> Mm	<b>Workplace Wellness</b> m
<b>Environmental Biology</b> M	<b>Nursing</b> M	
<b>Environmental/Physical Geography</b> MH	<b>Nursing (RN to BSN Completion)</b> M	
<b>Environmental Impact and Sustainability</b> m	<b>Nutrition &amp; Dietetics</b> Mm	
<b>Ethics</b> m	<b>Operations &amp; Supply Chain Management</b> m	
	<b>Organizational Development</b> M	

M – major  
 m – minor and/or area of study  
 H – honors program available  
*Italics* – concentration or emphasis

VISIT [WWW.EIU.EDU/MAJORS](http://WWW.EIU.EDU/MAJORS) TO CONNECT YOUR INTERESTS TO OUR MAJORS.

# OPPORTUNITY LIVES HERE.

Students from all kinds of backgrounds and experiences succeed at EIU. We make the experience accessible and inclusive so that you can be focused on your education. Need help navigating your financial aid options? Don't hesitate to ask. We're committed to helping you succeed, and that commitment doesn't end at the classroom door.

## TRANSFER ACADEMIC EXCELLENCE SCHOLARSHIPS

<b>CUMULATIVE GPA</b>	<b>TIER ONE</b>	
	<b>3.5 - 4.0</b>	<b>\$5,000*</b> (\$2,500 ANNUALLY)
	<b>TIER TWO</b>	
	<b>3.0 - 3.49</b>	<b>\$3,000*</b> (\$1,500 ANNUALLY)

\* Renewable up to four consecutive semesters if renewal criteria is met. Full-time enrollment (12 semester hours) required.

## MID-YEAR & SUMMER APPLICANTS:

Mid-Year and Summer applicants will need to notify the Federal Student Aid Information Center (1-800-4FEDAID) of their plans to transfer to EIU by submitting Eastern's FAFSA School code: 001674. Additionally, summer applicants will need to request an institutional summer application form from Eastern's Office of Financial Aid at 217-581-6405.

## ◆ COST TO ATTEND EASTERN: 2020-2021

	<b>in-state</b>	<b>out-of-state*</b>
Tuition	\$ 9,241	\$ 11,551
Textbook rental fee	\$ 293	\$ 293
Program/services fees	\$ 2,822	\$ 2,822
Room & board	\$ 9,864**	\$ 9,864**
<b>Total</b>	<b>\$ 22,220**</b>	<b>\$ 24,530**</b>

\*All residents of bordering states to Illinois (Indiana, Iowa, Kentucky, Michigan, Missouri & Wisconsin) and academically talented out-of-state transfers with a 3.0 GPA pay in-state tuition.

\*\*Based on 30 hours of enrollment and the 12-plus meal plan for incoming students.

NOTE: Tuition is based on \$308 per credit hour for in-state residents and \$385 per credit hour for non-residents.



## PHI THETA KAPPA

<https://eiu.academicworks.com>

- \$1,000 one-time award
- Fall admissions only
- Associate degree required
- Minimum 3.50 GPA
- Application deadline is early February

## STUDENT EMPLOYMENT

[www.eiu.edu/humanres/student\\_employment.php](http://www.eiu.edu/humanres/student_employment.php)

- Apply in any department on campus
- Work-Study is available for students with financial need
- Contact: 217-581-3712 or tljones9@eiu.edu

## VETERANS BENEFITS

[www.eiu.edu/finaid/veteran\\_benefits.php](http://www.eiu.edu/finaid/veteran_benefits.php)

[www.eiu.edu/veterans](http://www.eiu.edu/veterans)

- Various programs available
- Contact: 217-581-7510 or finaid@eiu.edu
- Online resources at [www.gibill.va.gov](http://www.gibill.va.gov)

## PANTHER PROMISE TUITION WAIVER

**We are committed to making your education accessible.**

Students from households with an annual income ranging from \$32,000 to \$79,000 will receive up to \$2,500 towards tuition for up to eight semesters.



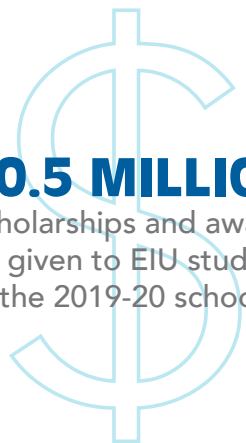
**APPLY FOR ADDITIONAL EIU SCHOLARSHIPS HERE:** [eiu.academicworks.com](http://eiu.academicworks.com)

## DON'T FORGET YOUR FAFSA!

Nearly every student is eligible for some form of financial aid. Students should complete the Free Application for Federal Student Aid (FAFSA) as soon as possible after Oct. 1.



**\$20.5 MILLION**  
in scholarships and awards  
were given to EIU students  
during the 2019-20 school year.



## GUARANTEED TUITION RATE

The Guaranteed Tuition Rate Program ensures your first-year tuition rate at EIU will remain the same for four continuous academic years. Even if tuition costs rise during your time at EIU, yours will not.

*This plan applies only to tuition; all other expenses, including fees and room/board, may change.*

OUR SCHOOL CODE IS:

**001674**

**WWW.FAFSA.ED.GOV**

Make sure you list us as your first choice!  
EIU's priority filing date for financial aid is **December 15**.

Top "Bang for the Buck"  
colleges in the Midwest  
(Washington Monthly)



# TRANSFER CREDIT

## ASSOCIATE DEGREE BENEFITS

A student transferring to Eastern who has received a baccalaureate-oriented associate degree is guaranteed the following:

- At least 60 semester hours in transfer credit
- Junior status
- All lower-division general education requirements met
- Cultural Diversity requirement met, unless a teaching licensure is sought

**Note: Students may transfer EIU coursework back to the community college to complete an associate degree.**

## ILLINOIS ARTICULATION INITIATIVE

[www.iTransfer.org](http://www.iTransfer.org)

Transfer students who complete the 37-41 semester-hour package of the Illinois Articulation Initiative (IAI) from any participating college or university in Illinois will be guaranteed the following:

- All lower-division EIU general education requirements will automatically be waived.
- The Cultural Diversity requirement will be met, unless a teaching licensure is sought.

## CREDIT FOR NATIONALLY STANDARDIZED TESTS

(CLEP, Advanced Placement, International Baccalaureate and UExcel Exams)

[www.eiu.edu/registra](http://www.eiu.edu/registra)

- College credit will be granted toward graduation and may be used in fulfilling requirements if scores meet Eastern's standards established by the appropriate department.
- Official test scores and records must be sent to the Office of the Registrar for evaluation to determine proper placement and credit.

## TRANSFEROLOGY

[www.iTransfer.org](http://www.iTransfer.org) - My Credits Transfer

Eastern is a participant in the Transferology system, a free online resource where you can find out how courses transfer between institutions, how courses satisfy degree requirements, and the different majors institutions offer.

## OUT-OF-STATE CREDIT

- Content will be compared to course offerings at Eastern.
- Eastern's Office of the Registrar will need a copy of the transfer institution's catalog and/or syllabi of courses taken.
- Sending this information prior to enrollment will assist in the evaluation of transfer credit.
- Courses will count toward general education if they clearly match an IAI general education course description.
- Out-of-state baccalaureate-oriented associate degrees automatically meet Eastern's lower-level general education requirements.

# GRADUATION REQUIREMENTS

To achieve a baccalaureate degree, students must complete the following requirements:

## 1. GENERAL EDUCATION REQUIREMENTS

Students must complete a Senior Seminar or Study Abroad Capstone and one of the following general education programs:

- Transferable baccalaureate-oriented Associate Degree
- Illinois Articulation Initiative General Education Core Curriculum
- Courses that fit into EIU general education

## 2. DEGREE PROGRAM

- Requirements for the major must be met.
- Majors may have specific GPA requirements. Consult catalog for details.

## 3. 12 SEMESTER HOURS AT EIU IN MAJOR

## 4. 40 SEMESTER HOURS OF UPPER-DIVISION COURSES

- Courses from a community college or other two-year institution will not count in this total.
- Upper-division courses at Eastern are those numbered 3000 or above.

## 5. 42 SEMESTER HOURS FROM EIU

- 32 must be taken in the junior and senior years.
- 12 must be taken during the senior year.

## 6. 120 SEMESTER HOURS CUMULATIVE

- All college-level credit, including electives, count toward these 120 hours.

## 7. FOREIGN LANGUAGE

- Successfully complete two semesters in a single foreign language. Students may be exempt from this requirement based on foreign language taken while in high school or at their previous colleges.

Exemptions:

- Two years in a single foreign language in high school with a "C" average
- Second semester of a single foreign language in college with a passing grade

## 8. "C" OR BETTER IN ENGLISH AND SPEECH

- A transferable degree does not exempt a student from this requirement.
- A student receiving a "D" or "F" grade in English or speech will have to repeat the course.

## 9. WRITING COMPETENCY REQUIREMENT

Electronic Writing Portfolio

- Submit three papers written in EIU coursework to EWP.

91%

of EIU undergraduates  
**SECURE EMPLOYMENT**  
in professional positions  
or make plans to attend  
**GRADUATE SCHOOL**





# NEW STUDENT & FAMILY PROGRAMS

Your successful transition to life as an EIU student is important to us. To ensure this success, you will participate in two different programs.

**Log onto MyEIU to register for each program.**

## 1. TRANSFER ORIENTATION

We will complete the processes that make you an official EIU student, answer any questions that you have and connect you to life at Eastern. You will meet with an adviser and register for classes.

The sooner you attend a Transfer Orientation, the sooner you will get the courses you want.

## 2. TRANSITION TO CAMPUS - PROWL

This program will help you connect and engage in your life at Eastern right away, allowing you to make the most of your time as a Panther.

## ORIENTATION DATES:

### ENTERING SPRING 2021

- Friday, October 23, 2020
- Friday, November 13, 2020
- Friday, December 4, 2020
- Friday, January 8, 2021

### ENTERING SUMMER OR FALL 2021:

- Friday, April 9, 2021
- Saturday, April 17, 2021
- Friday, April 30, 2021
- Tuesday, June 1, 2021
- Saturday, July 10, 2021
- Tuesday, August 17, 2021

# BE READY TO EXPLORE, ENGAGE AND THRIVE.

Wherever your interests may lead you, we've got a community ready to help you develop them. We have more than 210 registered student organizations, from clubs and Greek life to intramural sports! Can't find exactly what you're looking for? Create your own club and inspire others. You'll also find limitless options to grow through community service, faculty-mentored research and over 580 study abroad programs. So many opportunities to connect with who you truly want to be!



**210 +**  
REGISTERED STUDENT  
ORGANIZATIONS

**580 +**  
STUDY ABROAD  
PROGRAMS



# FIND YOUR HOME.



Charleston has plenty to offer for the adventurous student. Go hiking or canoeing in our state park, shop and dine at our downtown square, or enjoy live music over a cup of coffee. Our community invests in EIU and our students to make Charleston your home away from home.



## VISIT OPPORTUNITIES

### Campus Tours

EIU offers campus tours Monday-Friday and select Saturdays.

### Virtual Visits

Explore our campus, participate in a virtual session, or meet individually with an admissions counselor, all from the comfort of your own home.

## ON THE SPOT ADMISSION DECISION!

If you have earned at least 24 transferable college-level credit hours, we encourage you to visit campus for an immediate admission decision. It's easy!

1. Schedule your appointment.
2. Submit your application for admission.
3. Either send ahead of time or bring with you your official, sealed transcripts from each institution you've attended, including dual-credit coursework.

FOR MORE DETAILS, VISIT [eiu.edu/visit](http://eiu.edu/visit)



IAMEIU



@EIU



EIU



WEAREEIU

